



### Description & Features:

- Developed for use in heavy duty industrial applications
- Compact stainless steel construction with welded stainless steel sensor
- Available ranges up to 8,700 psi
- Wide range of mechanical and electrical connections
- ±0.5% accuracy
- NEMA 4X / IP65 and IP67
- CE and RoHS compliant
- Customizable
- 5 year warranty

### Applications:

- Suitable for heavy duty process and automation control including mobile hydraulics and presses

### Specifications

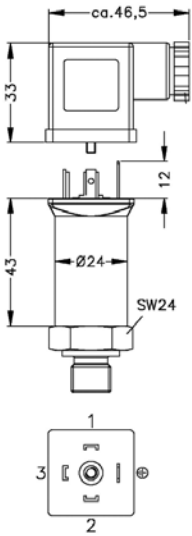
<b>Output Signal</b>	Standard 2-wire: 4-20 mA / Vs = 8-32 Vdc Optional 3-wire: 0-10 V / Vs = 14-30 Vdc Optional 3-wire ratiometric: Vsig = 0.5-4.5 Vs / Vs = 5 ± 0.5 Vdc
<b>Accuracy</b>	±0.5% FSO
<b>Permissible Load</b>	2-wire: Rmax = [(Vs - Vs min) / 0.02] Ohm 3-wire: Rmin = 10 kOhm
<b>Influence Effects</b>	Supply: 0.05% FSO / 10 V Load: 0.05% FSO / kOhm
<b>Response Time</b>	2-wire: ≤10 ms 3-wire: ≤3 ms
<b>Measuring Rate</b>	1 kHz
<b>Thermal Error</b>	<±0.3% FSO / 10K, Compensated range 32°F to 158°F (0°C to 70°C)
<b>Permissible Temperatures</b>	Medium: -40°F to 257°F (-40°C to 125°C) Electronics environment: -40°F to 185°F (-40°C to 85°C) Storage: -40°F to 185°F (-40°C to 85°C)
<b>Short-circuit Protection</b>	Permanent 3-wire ratiometric: None
<b>Reverse Polarity Protection</b>	No damage. No function.
<b>Electromagnetic Protection</b>	Emission and immunity according to EN 61326
<b>Stability</b>	Vibration: 20 g, 25 Hz to 2 kHz according to DIN EN 60068-2-6 Shock: 500 g / 1 ms according to DIN EN 60068-2-27
<b>Pressure Port</b>	316Ti SS
<b>Pressure Port Connection</b>	1/4" NPT (others available upon request)
<b>Housing</b>	304 SS
<b>Diaphragm</b>	17-4PH SS, welded
<b>Weight</b>	120 g
<b>Current Consumption</b>	2-wire: 25 mA max 3-wire voltage: 5 mA (short-circuit current 20 mA) 3-wire ratiometric: 3 mA
<b>Long-term Stability</b>	<±0.3% FSO/yr at reference conditions
<b>Operating Life</b>	>100 x 10 <sup>6</sup> cycles
<b>CE Conformity</b>	EMC directive: 2004/108/EC Pressure equipment directive: 97/23/EC (module A). Valid for devices with max permissible overpressure > 3,000 psi

## Order Codes

Range	Over-pressure	Burst Pressure	Code
0/100 psi	203 psi	406 psi	LMH0100
0/145 psi	508 psi	1,015 psi	LMH0145
0/230 psi	508 psi	1,015 psi	LMH0230
0/360 psi	1,015 psi	2,030 psi	LMH0360
0/580 psi	2,030 psi	4,060 psi	LMH0580
0/870 psi	2,030 psi	4,060 psi	LMH0870
0/1,500 psi	5,075 psi	10,150 psi	LMH1500
0/2,300 psi	5,075 psi	10,150 psi	LMH2300
0/3,600 psi	10,150 psi	20,305 psi	LMH3600
0/5,800 psi	17,405 psi	21,755 psi	LMH5800
0/8,700 psi	17,405 psi	21,755 psi	LMH8700

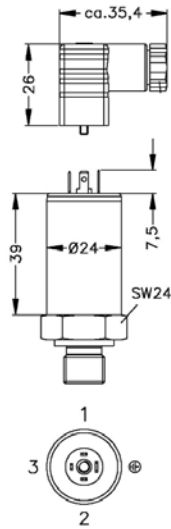
## Electrical Connection

### Standard

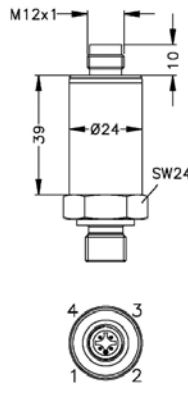


ISO 4400  
(IP 65)

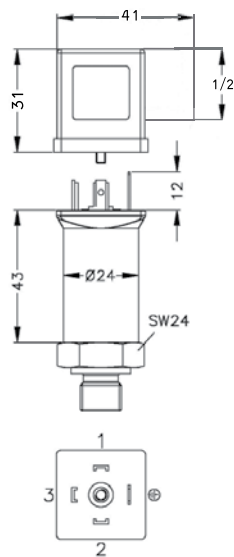
### Optional



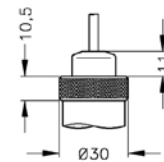
Micro, contact  
distance 9.4 mm (IP 65)



M12x1, 4-pin  
(IP 67)



DIN 43650 A  
1/2" NPTF conduit fitting

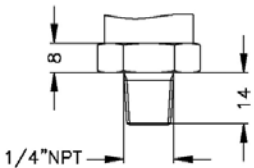


Cable outlet (IP 68)  
5 Different cable  
types/lengths  
available

Note: Other connections available upon request

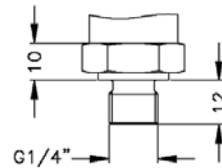
## Mechanical Connection

### Standard



1/4" NPT

### Optional



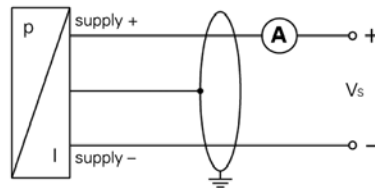
G1/4" DIN 3852

Note: Measurements are in mm

## Wiring Diagram

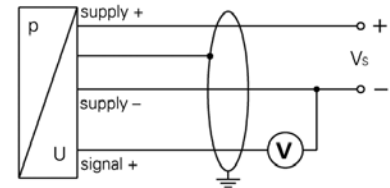
### Standard

#### 2-wire-system (current)



### Optional

#### 3-wire-system (voltage)



## Pin Configuration

Electrical Connection	ISO 4400	Micro (contact distance 9.4mm)	M12x1 (4 pin), plastic	Cable Colours (DIN 47100)
Supply+	1	1	1	White
Supply-	2	2	2	Brown
Signal+ (for 3-wire)	3	3	3	Green
Shield	Ground pin	Ground pin	4	Green/yellow